

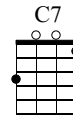
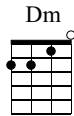
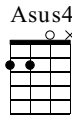
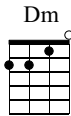
# Suicide Is Painless

Words by Mike Altman

Music by Johnny Mandell

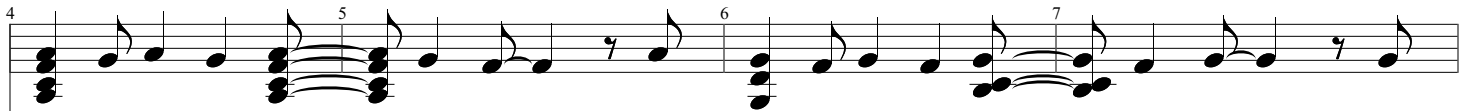
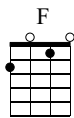
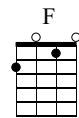
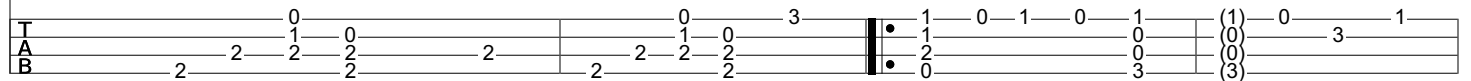
Arranged by Spencer Gay

♩ = 112

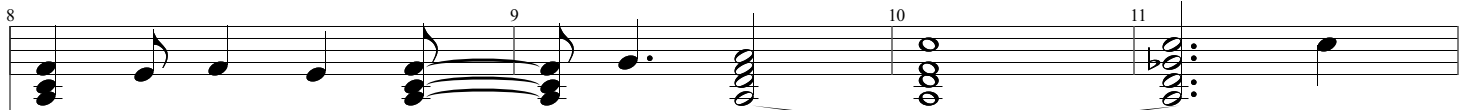
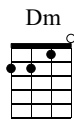
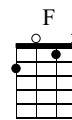
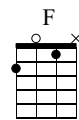
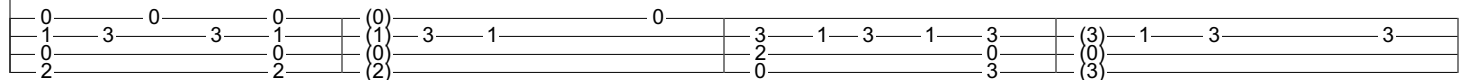


*mf*

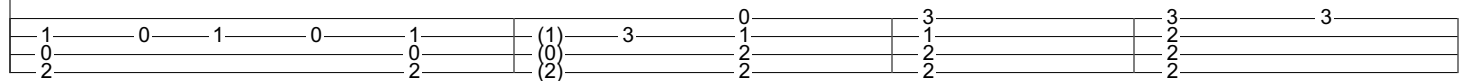
Through ear ly mor ning fog I see  
 game of life is hard to play I'm  
 sword of time will pierce our skins It  
 brave manonce re quest ed me to



vis ions of the things to be The pains that are with held for me I  
 go nna lose it a ny way The los ing card I'll some day play so  
 does n't hurt when it be gins but as it works its way on in the  
 an swerquest ions that are key is it to be or not to be and



re a lize and I can see That  
 this is all I have to say.  
 pain grows stro nger, watch it grin.  
 I re plied oh why ask me



Gm7



C9



F6



Dm7



12 | su i cide is pain less | 13 | It brings on ma ny chan ges and | 14 | | 15 |

5 3 5 3 5 (5) 3 3 5 3 5 3 5 (5) 3 3

5 3 5 3 5 (5) 3 3 5 3 5 3 5 (5) 3 3

3 3 (3) 5 5 (5) 5 (5)

B♭ M7



Gm7



Dm



16 | I can take or leave it if I please | 17 | | 18 | | 19 | | 4x

The  
The  
A  
And

3 5 8 10 (10) 8 10 8 10 (10) (10) 8 4x

5 5 3 10 10 10 10 9 10 (10) (10) (9) (10)

B♭ M7



Gm7



Dm



20 | you can do the same thing if you please | 21 | | 22 | | 23 |

3 5 8 10 (10) 8 10 8 10 (10) (10) (10)

5 5 3 10 10 10 10 9 10 (10) (10) (9) (10)

3 3 (3) 5 5 (5) 5 (5)